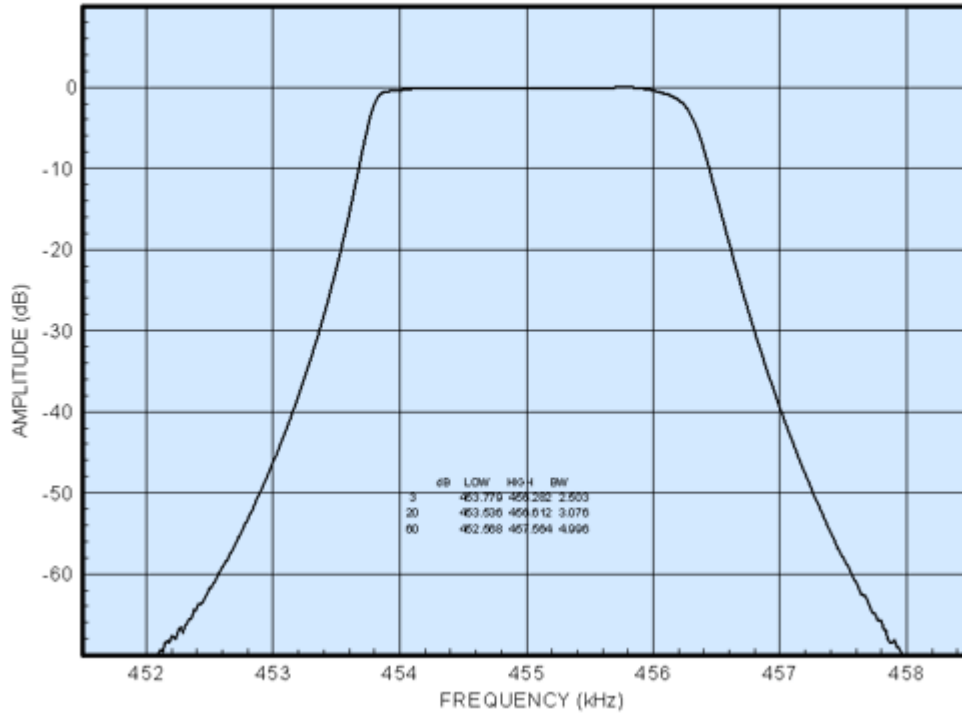


Plots of 526-8694-010

LOSS= 1.03

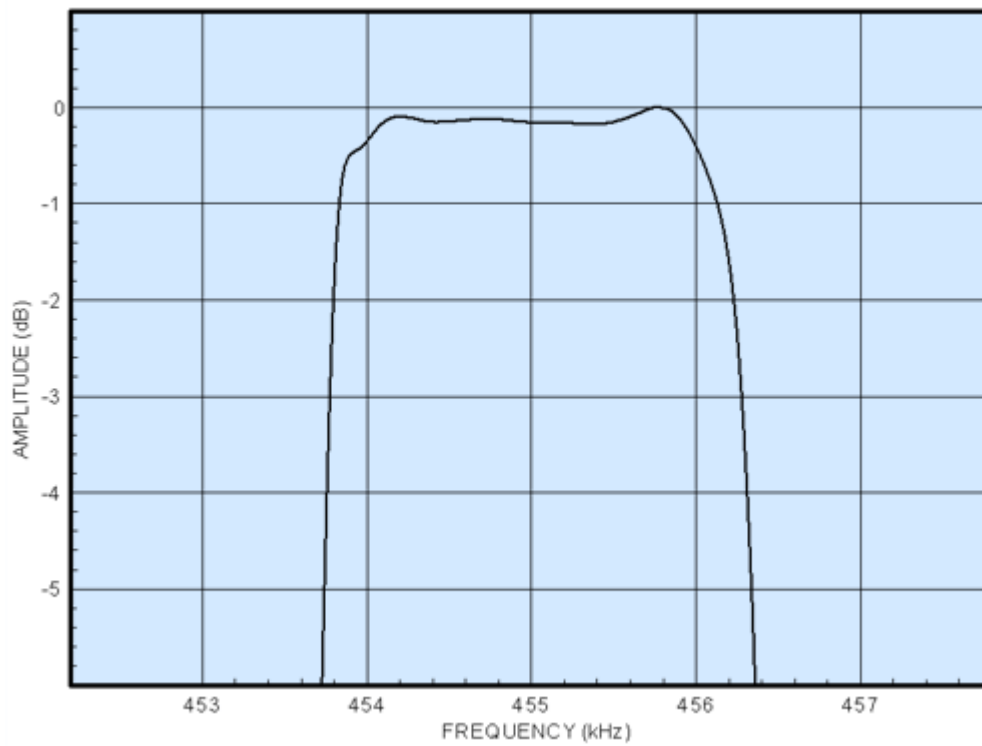
18 Jul 1998

526-8694-010



18 Jul 1998

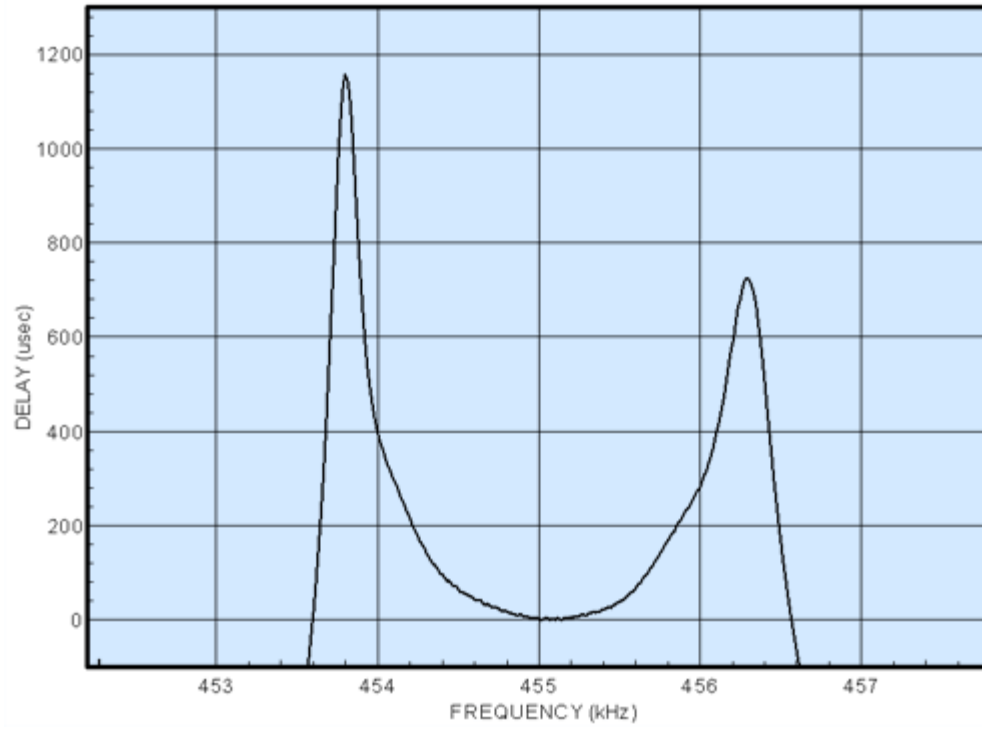
526-8694-010



Ref. 752 usec

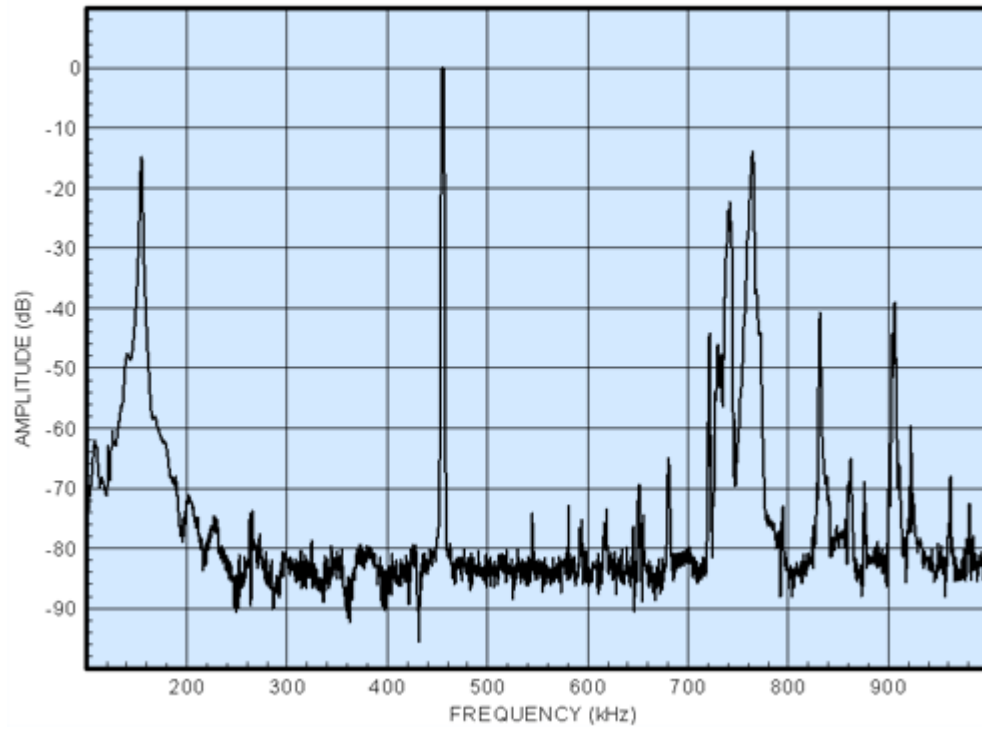
18 Jul 1998

526-8694-010



18 Jul 1998

526-8694-010



COLLINS TORSIONAL MECHANICAL FILTER

8- POLE DESIGN

ELECTRICAL CHARACTERISTICS	ROOM TEMPERATURE		0°C TO 60°C	
	VALUE	TOLERANCE	VALUE	TOLERANCE
CENTER FREQUENCY	455.00	± 0.10 (kHz)	455.00	± 0.15 (kHz)
BANDWIDTHS F3H - F3L F60H - F60L	2.50 kHz 5.20 kHz	± 0.10 (kHz) max.	2.50 kHz 5.20 kHz	± 0.10 (kHz) max.
PASSBAND RIPPLE	3.0 dB	max.	3.0 dB	max.
INSERTION LOSS	5.0 dB	max.	5.0 dB	max.
STOPBAND 440 kHz to F60L F60H to 470 kHz	60 dB 60 dB	min. min.	60 dB 60 dB	min. min.

NOTE: The maximum signal input voltage is 1.0 volt RMS.

ROCKWELL COLLINS FILTER PRODUCTS 14192 Franklin Ave., Tustin, CA 92780		526-8694-010	
ENGINEER:	D. P. Havens	FILTER TYPE: SYM	REV. LTR. --
APPROVED:	P. Ysais	FSCM NO. 2X491	DATE: 2-28-01

ENVIRONMENTAL REQUIREMENTS:

OPERATING TEMPERATURE RANGE: 0°C to +60°C

NON-OPERATING TEMPERATURE RANGE: -30°C to +85°C

VIBRATION: MIL-STD-202, Method 201, 10 G's, 10 Hz to 55 Hz

SHOCK: MIL-STD-202, Method 213B, 50 G's, 11 ms, half-sine

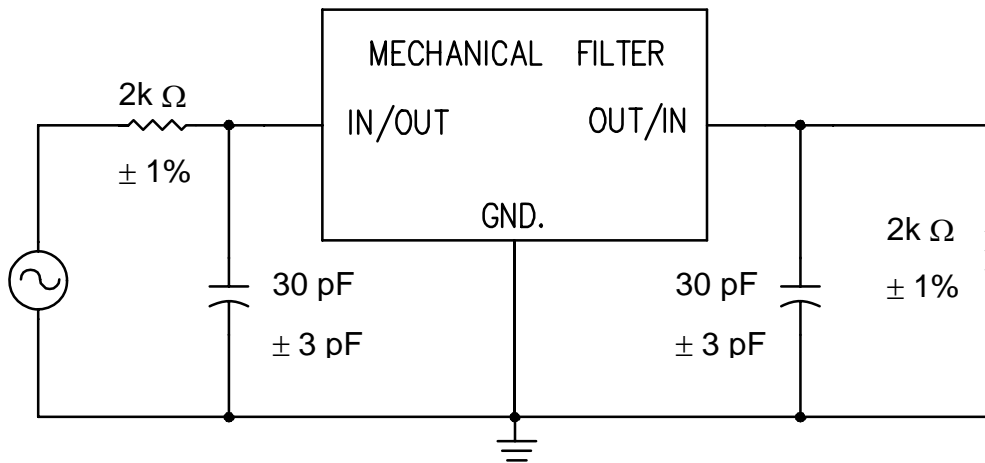
MECHANICAL REQUIREMENTS:

CONSTRUCTION: Sealed, Non-Hermetic

CASE STYLE: PS

MARKING: Rockwell Part Number
Date Code

TEST CIRCUIT:



NOTE: 30 pF Includes any board stray capacitance.

ROCKWELL COLLINS
FILTER PRODUCTS
14192 Franklin Ave., Tustin, CA 92780

526-8694-010