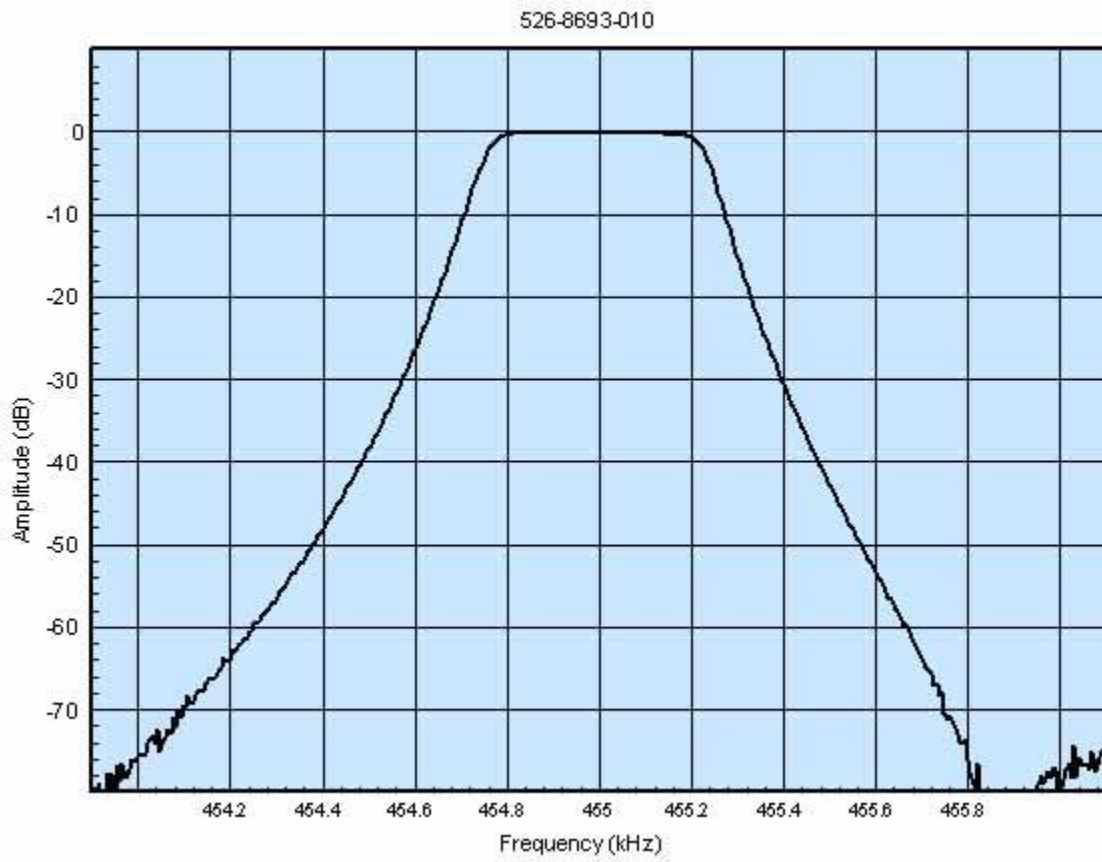
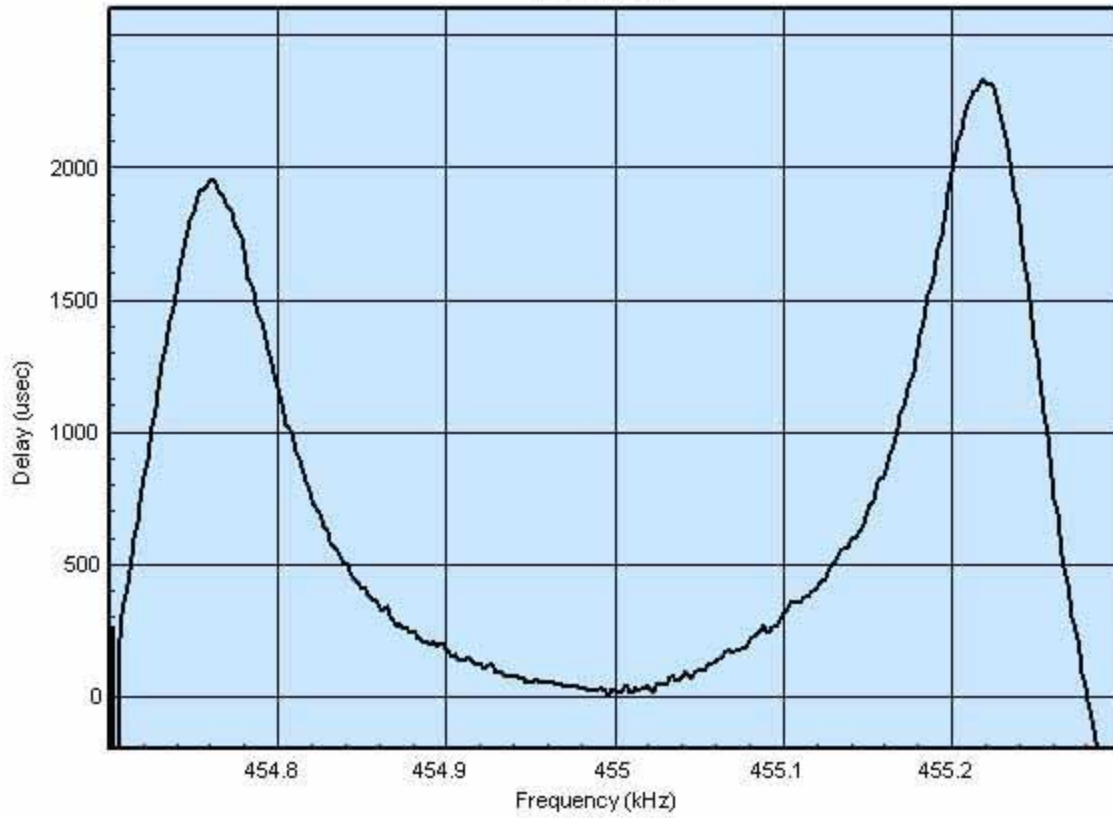


Plots of 526-8693-010



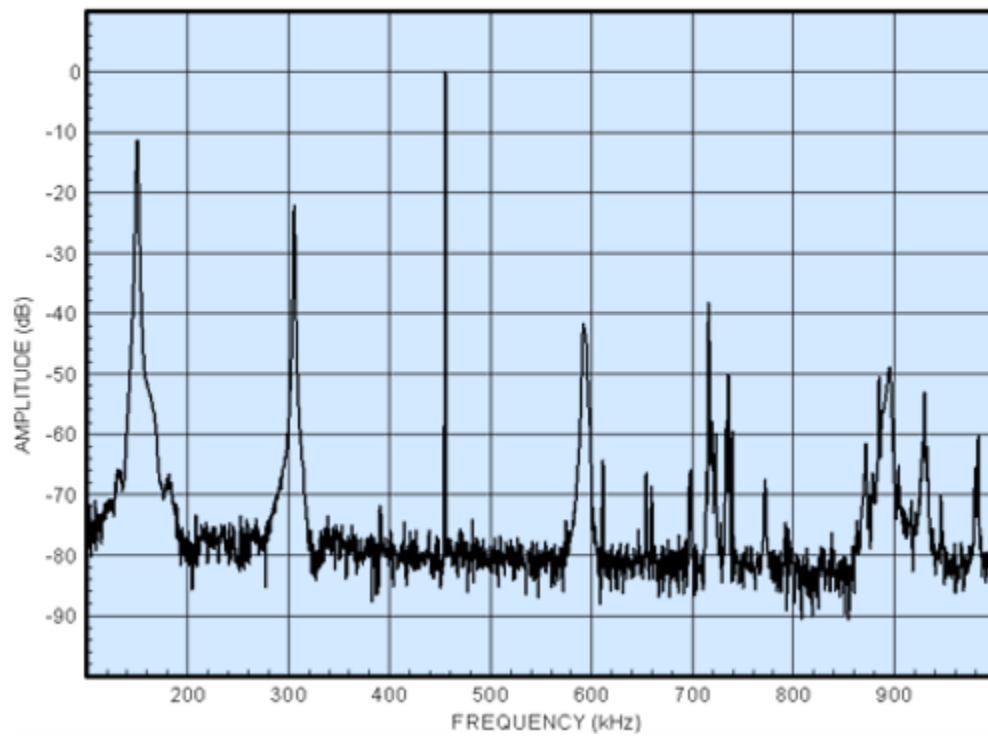
Ref. 2740 usec

526-8693-010



17 Feb 1999

526-8693-010



COLLINS TORSIONAL MECHANICAL FILTER

7- POLE DESIGN

ELECTRICAL CHARACTERISTICS	25 DEG. C		TEMP. RANGE	
CENTER FREQUENCY	FREQ. (kHz) 455.00	TOL. (kHz) ± 0.10	FREQ. (kHz) 455.00	TOL. (kHz) ± 0.15
BANDWIDTHS	WIDTH (kHz)	TOL. (kHz)	WIDTH (kHz)	TOL. (kHz)
F3H - F3L	0.50	± 0.10	0.50	± 0.10
F60H - F60L	2.00	MAX	2.00	MAX
PASSBAND RIPPLE	(dB) 3	TOL. (kHz) MAX	(dB) 3	TOL. (kHz) MAX
INSERTION LOSS	(dB) 5	TOL. MAX	(dB) 6	TOL. MAX
STOPBAND	(dB)	TOL.	(dB)	TOL.
440 - F60L (kHz)	60	MIN	60	MIN
F60H - 470 (kHz)	60	MIN	60	MIN

NOTE: The max. signal input voltage is 1.0 volt RMS.

ROCKWELL COLLINS
FILTER PRODUCTS
14192 Franklin Ave., CA 92780

526-8693-010

ENGINEER: P. Ysais

FILTER TYPE: SYM

REV. LTR. --

APPROVED: D. P. Havens

FSCM NO.
2X491

DATE: 11-8-93

ENVIRONMENTAL REQUIREMENTS:

OPERATING TEMPERATURE RANGE: 0°C to +60°C

NON-OPERATING TEMPERATURE RANGE: -30°C to +85°C

VIBRATION: MIL-STD-202, Method 201, 10 G's, 10 Hz to 55 Hz

SHOCK: MIL-STD-202, Method 213B, 50 G's, 11 ms, half-sine

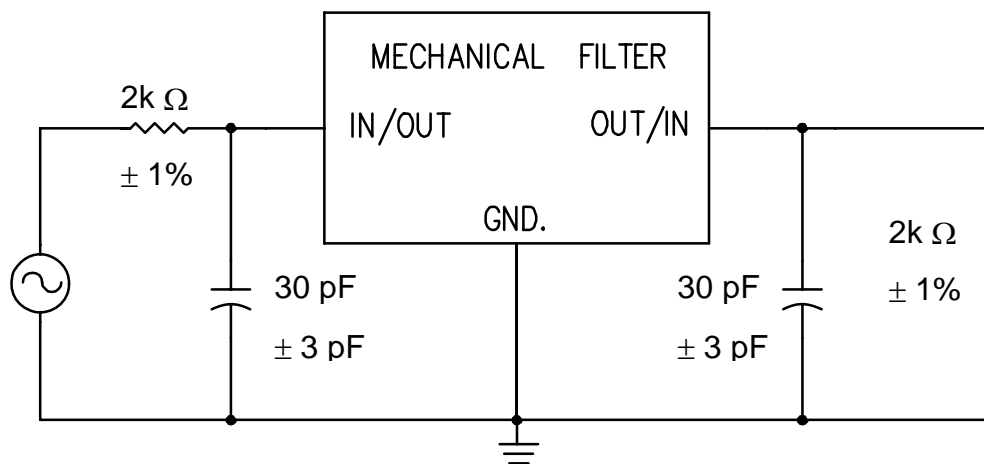
MECHANICAL REQUIREMENTS:

CONSTRUCTION: Sealed, Non-Hermetic

CASE STYLE: PS

MARKING: Rockwell Collins Part Number
Date Code

TEST CIRCUIT:



NOTE: 30 pF Includes any board stray capacitance.