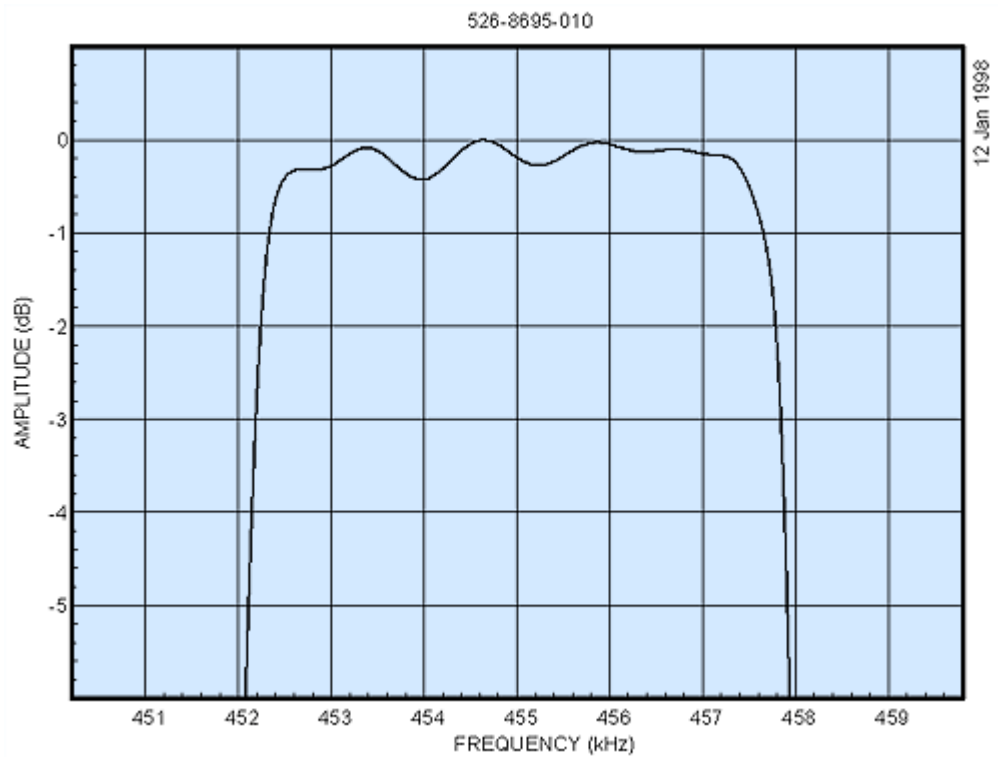
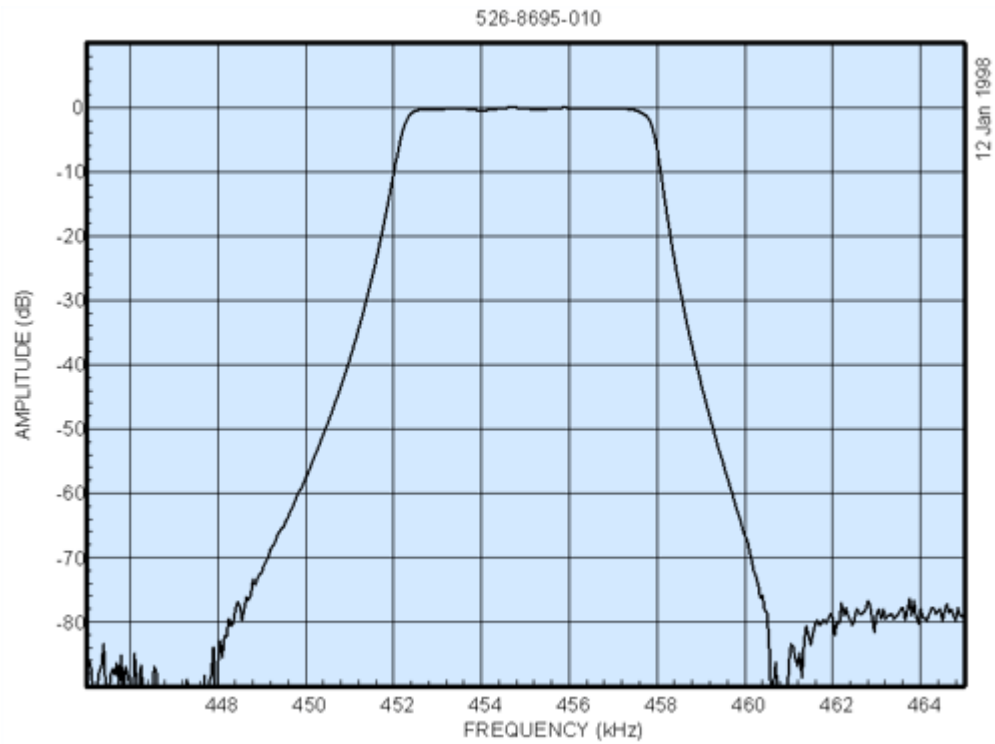
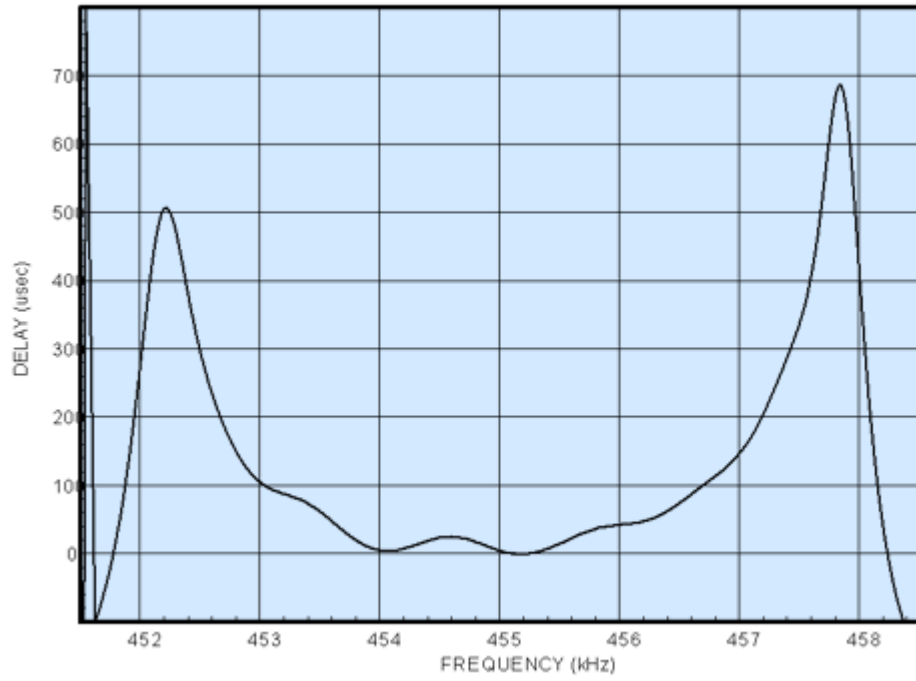


**Plots of 526-8695-010**



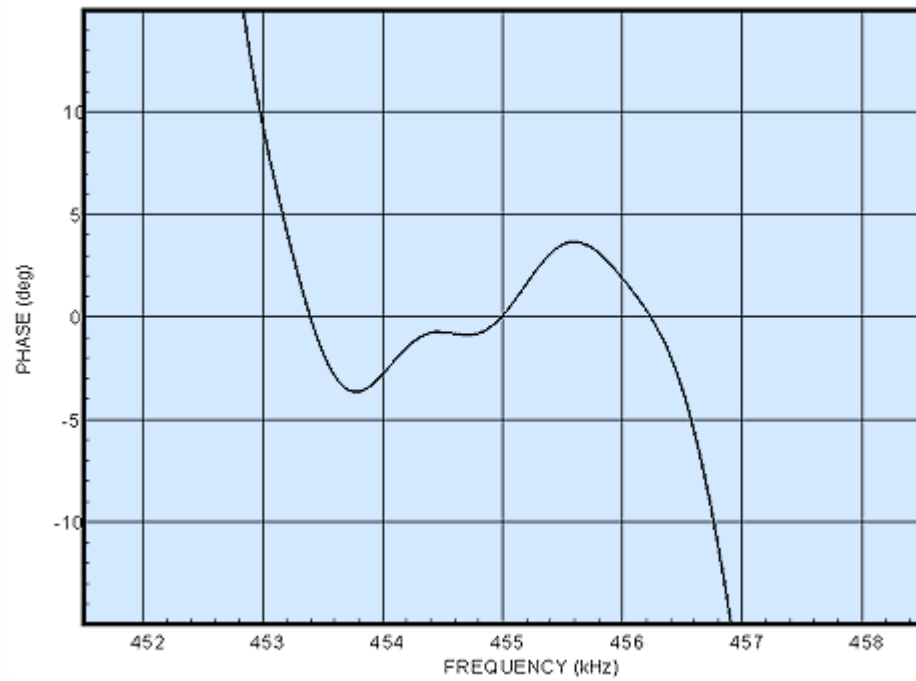
526-8695-010



12 Jan 1998

Ref. 359 usec

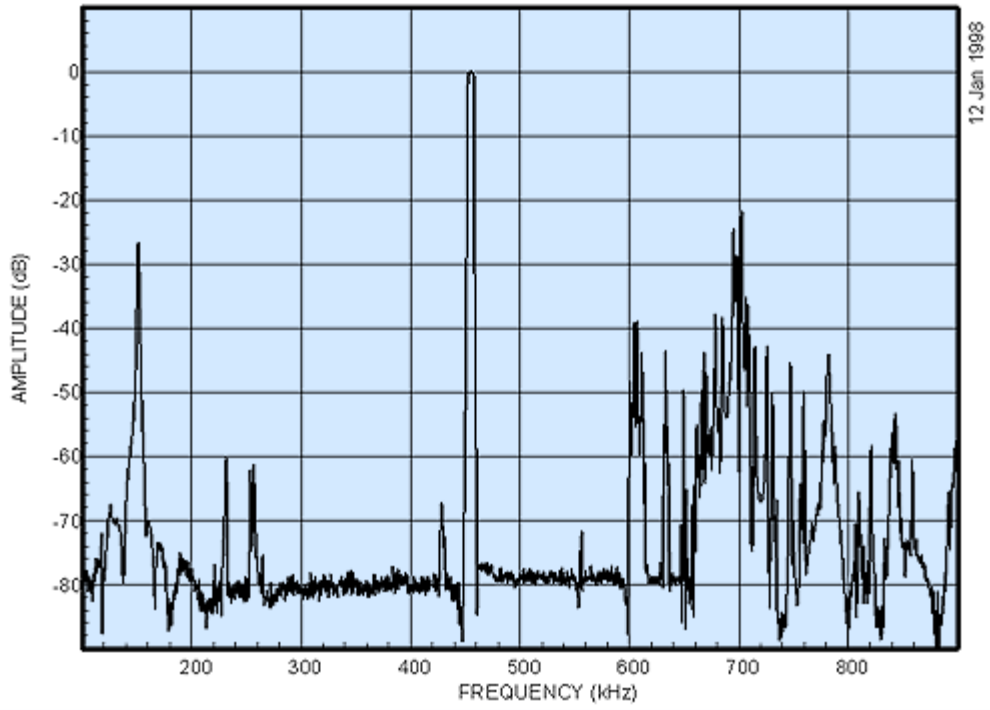
526-8695-010



12 Jan 1998

Delay 381 usec

526-8695-010



**COLLINS TORSIONAL MECHANICAL FILTER**

**8- POLE DESIGN**

ELECTRICAL CHARACTERISTICS	+25°C		0°C TO +60°C	
	VALUE	TOLERANCE	VALUE	TOLERANCE
<b>CENTER FREQUENCY</b>	455 kHz	± 0.20kHz	455 kHz	± 0.30kHz
<b>BANDWIDTHS</b> F3H - F3L F60H - F60L	5.50 kHz 11.00 kHz	min. max.	5.50 kHz 11.00 kHz	min. max.
<b>PASSBAND RIPPLE</b>	3.0 dB	max.	3.0 dB	max.
<b>INSERTION LOSS</b>	5.0 dB	max.	5.0 dB	max.
<b>STOPBAND</b> 440 kHz to F60L F60H to 470 kHz	60 dB 60 dB	min. min.	60 dB 60 dB	min. min.

NOTE: The maximum signal input voltage is 1.0 volt RMS.

ROCKWELL COLLINS  
FILTER PRODUCTS  
14192 Franklin Ave., CA 92780

**526-8695-010**

ENGINEER: D. P. Havens

FILTER TYPE: SYM

REV. LTR. --

APPROVED: F. L. Fanthorpe

FSCM NO.  
2X491

DATE: 8-24-98

**ENVIRONMENTAL REQUIREMENTS:**

OPERATING TEMPERATURE RANGE: 0°C to +60°C

NON-OPERATING TEMPERATURE RANGE: -30°C to +85°C

VIBRATION: MIL-STD-202, Method 201, 10 G's, 10 Hz to 55 Hz

SHOCK: MIL-STD-202, Method 213B, 50 G's, 11 ms, half-sine

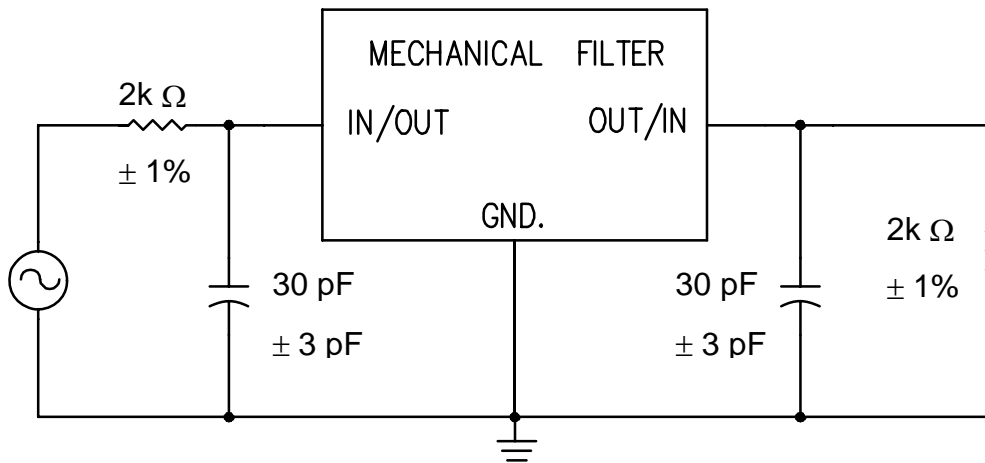
**MECHANICAL REQUIREMENTS:**

CONSTRUCTION: Sealed, Non-Hermetic

CASE STYLE: PS

MARKING: Rockwell Collins Part Number  
Date Code

**TEST CIRCUIT:**



Note: 30 pF Includes any board stray capacitance.

ROCKWELL COLLINS  
FILTER PRODUCTS  
14101 MYFORD ROAD, TUSTIN, CA 92780

526-8695-010